



Mythological medley: the terracotta decoration on the arcades

Sited high on a wooded hill on the boundary between Austria's Mostviertel and Wachau regions, the Schallaburg has a commanding view over the surrounding landscape. In the Middle Ages the fortified complex afforded protection from hostile attack; later on it was transformed into a magnificent aristocratic seat. Today the Schallaburg is an authentic setting for experiencing history, a fascinating locus of encounter with foreign cultures and a magical place to explore Renaissance garden design. Come and see the Schallaburg – become a part of history.

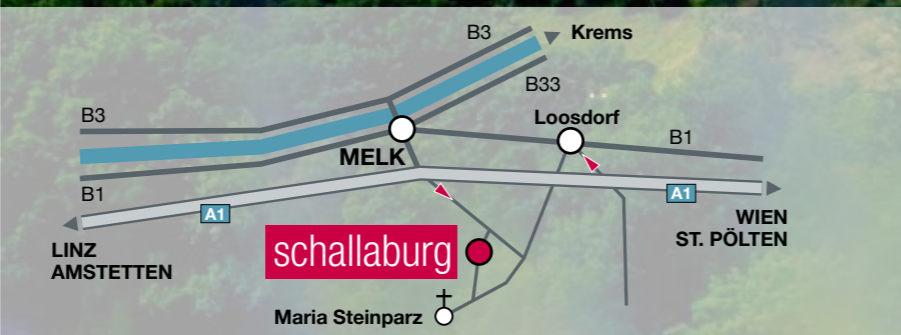
HELMUT LACKINGER

**CONTACT**  
Renaissanceschloss Schallaburg  
3382 Schallaburg 1  
+43 (0) 2754 6317-0  
office@schallaburg.at  
www.schallaburg.at

**CASTLE RESTAURANT**  
+43 (0) 2754 6310  
restaurant@schallaburg.com

Media owner and publisher: Schallaburg  
Kulturbetriebsges.m.b.H., 3382 Schallaburg 1.  
Graphic design: Büro Meisinger, 1060 Vienna.  
Printed by Grasl Druck, 2540 Bad Vöslau.

**GETTING THERE**  
West motorway A1,  
exit for Melk or Loosdorf  
Parking for coaches and cars  
Melk railway station:  
shuttle service available to and  
from Melk railway station  
(tickets must be purchased)

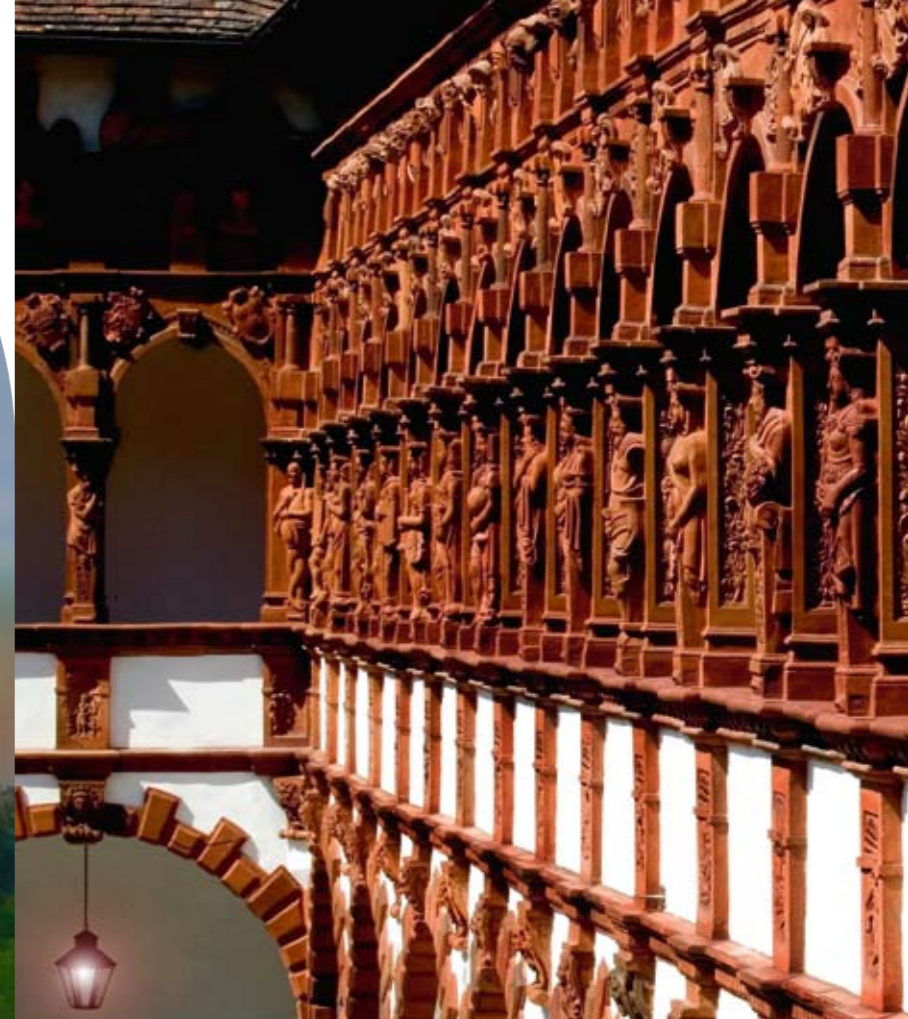


KULTUR NIEDERÖSTERREICH



# renaissance castle schallaburg

EXPLORE CULTURE, HISTORY, NATURE



“THE FINEST  
**renaissance castle**  
NORTH OF THE ALPS”



MANFRED HORVATH

### FROM FORTRESS TO PALACE

A tour of the Schallaburg takes the visitor on a fascinating trip back in time, from the High Middle Ages to the 16<sup>th</sup> century, when Hans Wilhelm of Losenstein had the fortified castle transformed into one of the finest Renaissance castles north of the Alps. The tour through the centuries takes you from the Romanesque residential fortress via the Gothic chapel and the old Armoury Hall to the arcaded courtyard with its unique terracotta decoration, giving you a taste of the romantic age of chivalry as well as the art, riches and exuberant *joie de vivre* of the Renaissance princes.

**Our favourite tips for cultural, sporting and culinary tours around the Schallaburg. For more excursions and trips, visit [www.mostviertel.at](http://www.mostviertel.at)**

The Schallaburg is the starting point for hikes through lush green meadows and shady forests. Three clearly-marked trails reveal the impressively varied beauty of the area at any time of the year. The trails range from an easy stroll suitable for children's pushchairs (30 mins) to medium-range hikes for more ambitious visitors (1.5 hrs).



Probably the most fun way to get from Melk to Wieselburg is by the Mostviertel Rail-bike. You'll have to push those pedals, but your efforts will be richly rewarded by the fascinating flora and fauna you'll see along the 11-kilometre track. For two 'chauffeurs' and two passengers.



### FROM FLOWERBED TO FLOWERBED

A stroll from the castle moat to the 'Gerichtsstöckl' affords a fascinating insight into Renaissance garden design. Extending over 6,500 m<sup>2</sup> and based on the famous Italian villa gardens, this secluded paradise is a charming and characteristic mixture of vegetables, fruit and decorative flowers. Precious species roses in elaborately laid-out parterres, gnarled old trees, idyllic apple groves and herb knot borders form a magnificent and varied ensemble.

MANFRED HORVATH



RITA NEWMAN

### FROM THE MOSTVIERTEL TO DISTANT LANDS

The rich historical ambiance of the Schallaburg forms the perfect setting for annual exhibitions on cultural history, ethnography and contemporary history. In 2012 the Schallaburg will host the exhibition *Byzantium the Golden and the Orient* with a plethora of precious art treasures, and in 2013 visitors will be able to discover the legendary world of the Indian maharajahs. They can also explore culinary aspects of these distant lands: the Schallaburg restaurant will be serving various specialities inspired by the themes of the current exhibitions.

HELMUT LACKINGER

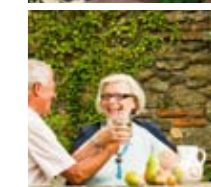


### ENJOYING THE SCHALLABURG

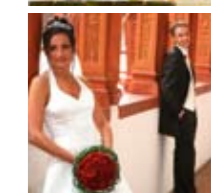
With its varied events and programmes – from the Garden Festival to the Day of the Golden Generation – the Schallaburg is the **ideal destination** for a family day out. One of the top attractions for our smaller visitors is the adventure playground in the castle moat, where a huge smoke-spewing dragon provides hours of exciting entertainment. The **Schallaburg restaurant** serves delicacies from the Mostviertel and specialities inspired by the subject of the current annual exhibition. The Schallaburg also offers a whole range of suitable locales for **private celebrations**, office parties or medieval banquets.



SCHALLABURG



RITA NEWMAN



SCHALLABURG



- 1 Gerichtsstöckl
- 2 New Castle
- 3 Archery ground
- 4 Renaissance garden
- 5 Moat/adventure playground
- 6 Arcaded courtyard
- 7 Ceremonial Hall (1<sup>st</sup> floor), Armoury cellar (basement floor)
- 8 Castle



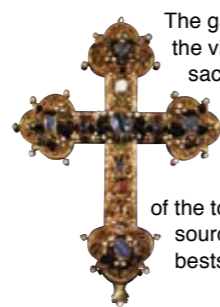
ISTOCKPHOTO/DON BAYLEY, MOSTVIERTLER SCHIENENRADL, STIFT MELK, BRANDNER, MOSTVIERTEL INFO



On the gentle waves of the Danube from Melk to Spitz, passing ruined medieval castles, precipitous crags and picturesque vineyards, the *MS Austria* takes its passengers through one of the prettiest stretches of the Wachau.



There are almost unlimited opportunities to explore the culinary treasures of the Mostviertel region. Numerous hospitable farmers open their cosy parlours to allow the visitor to sample their delicious home-brewed perry, accompanied by a hearty plate of traditional cold cuts.



The gates of the monastery at Melk admit the visitor to one of the most impressive sacred buildings in Europe. The venerable Benedictine monastery is part of the Wachau World Cultural Heritage Site and boasts unique sacred and profane art treasures. The highlight of the tour is the library, which was a major source of inspiration for Umberto Eco's bestselling novel *The Name of the Rose*.